

BYLAW G-2024-003

Being a By-Law to Setting out those roads and the portion thereof, that are seasonally maintained by the Municipality for the corporation of the Township of Joly and to repeal By-Law No. 2016-07

Legal Authority

Section 5(1) of the Municipal Act, S.O. 2001 The powers of a municipality shall be exercised by its council

Section 44 (1) of the Municipal Act, S.O. 2001 as amended, requires a municipality that has jurisdiction over a highway or bridge shall keep it in a state of repair that is reasonable in the circumstances, including the character and location of the highway or bridge

Scope of Powers

Section 8(1) of the Municipal Act, S.O. 2001 The powers of a municipality under this or any other Act shall be interpreted broadly so as to confer broad authority on the municipality to enable the municipality to govern its affairs as it considers appropriate and to enhance the municipality’s ability to respond to municipal issues.

Preamble

The Municipality has many hundreds of kilometers of roads which are, by law, classified as “public highways”. Only a small percentage of these roads are year round maintained by the Municipality for public use. The Municipality has a limited number of roads to which it provides limited maintenance for the summer season only and which are the subject matter of this By-law.

Direction

Council for the Corporation of the Township of Joly deems it expedient to establish a Bylaw to provide for Seasonal Road Maintenance on Municipal Roadway within the Corporation of The Township of Joly

Decision

Now therefore The Municipal Council of the Corporation of the Township of Joly enacts as follows:

1. The Seasonally maintained Roads, attached hereto as Schedule “A” and forms part of this By-Law is hereby adopted.
2. That By-Law# 2016-07 is hereby repealed.
3. That, this By-Law shall come into force and take effect immediately upon the Third and Final Reading thereof.

This By-Law takes effect on the day of its final passing

Read and adopted by Resolution 2024-0276 this 8th day of October, 2024.

Original Copy Signed

Mayor

Original Copy Signed

Clerk

THE CORPORATION OF THE TOWNSHIP OF JOLY
BYLAW G-2024-003
SCHEDULE "A"

1.0 DEFINITIONS

Seasonally Maintained Road:

A "seasonally maintained road" is a road, or portion thereof, which receives limited seasonal maintenance for a specified calendar period. This maintained portion is considered a Class 6 road under R.R.). 1990, Reg 6013/06.

Season

A "season" for the purpose of a seasonally maintained road is from the 15th day of May in the calendar year to the 15th day of October in the same calendar year. It is at the discretion of the Roads Department, if road maintenance falls outside this timeframe.

Limited Maintenance

"Limited Maintenance" means, or consists of:

- a) minimal gravelling, grading and ditching sufficient to permit passage during the seasonal period;
- b) patrolled twice a month;
- c) does not include major repairs to culverts or bridges. If such repairs are required for public safety, Council may eliminate all or a portion of the seasonal road from its seasonal maintenance schedule;
- d) a service standard below that which is provided for a year round Municipally maintained roads.

2.0 SCHEDULE: SEASONALLY MAINTAINED ROADS

Attached as Schedule 'A' is a list of the roads or the portions thereof, which are seasonally maintained under this By-law. Attached to each is a map/sketch of part of the road and the portion thereof, which is seasonally maintained.

3.0 AT USER'S RISK

Since a seasonally maintained road is maintained at a lower standard, the use of these roads is at "user's risk".

4.0 SIGNAGE

At the entrance of the roads which are approved for seasonal maintenance, there shall be posted the following signage:

**"SEASONAL ROAD NO MAINTENACE BEYOND THIS POINT OCTOBER 15TH - MAY 15TH USE AT OWN
RISK OTHER TIMES"**

BYLAW G-2024-003

SCHEDULE "A"

SEASONALLY MAINTAINED ROADS

Lynch Lake Road

From Forest Lake Road, on the road allowance between Concession 10, Lot 10 & Concession 10, Lot 11, travelling south on road allowance to deviation in Concession 9, Lot 10 ending at unopened road allowance between Concession 8 and Concession 9

Paisley Road

From Paisley Road east boundary of Concession 9, Lot 19 travelling east on deviated road through Concession 9, Lots 19, 20, 21 & 22; Concession 10, Lots 23, 24, 25, 26, 27, 28 & 29; Concession 11, Lots 30 & 31; Concession 10, Lot 32

Trudgeons Road

From Strong/Joly boundary on road allowance between Concession 6 & Concession 7, travelling east on road allowance deviating in Concession 7, Lot 5 ending at unopened road allowance between Concession 6 & 7, ending at east boundary of Lot 6.

Old Ranch Road

From Strong/Joly boundary on road allowance between Concession 8 & Concession 9, travelling east deviating into Concession 9, Lot 1, 2 & 3, then following road allowance between Concession 8 & Concession 9 ending at east boundary of Concession 8 & Concession 9, Lot 5.

Hill 14 Road

From road allowance in Concession 4, Lot 5 & Lot 6 traveling east on road allowance between Concession 4 & Concession 5 deviating in Concession 5, Lot 6 & 7; Concession 4, Lot 8; Concession 5, Lots 9, 10, 11 and ending at Concession 5 east boundary of Lot 13.

Kents Mill Road

From road allowance between Concession 2 & Concession 3, east boundary of Lot 2 travelling east deviating in Concession 2, Lot 3; Concession 2, Lots 3, 4, 5 & 6; Concession 2, Lot 7; Concession 3, Lot 7 & 8; Concession 2, Lots 8, 9, 10, 11 and ending at east boundary of Lot 12.

Gorge Trail

From Paisley Road westerly in Concession 9, Lot 16 deviating through Concession 9, Lot 16 ending at west boundary of Concession 9, Lot 15.

Opiongo Trail






From Paisley Road along road allowance between Concession 10, Lots 15 & 16, traveling east deviating through Concession 10, Lot 16 & ending at east boundary of Lot 19.

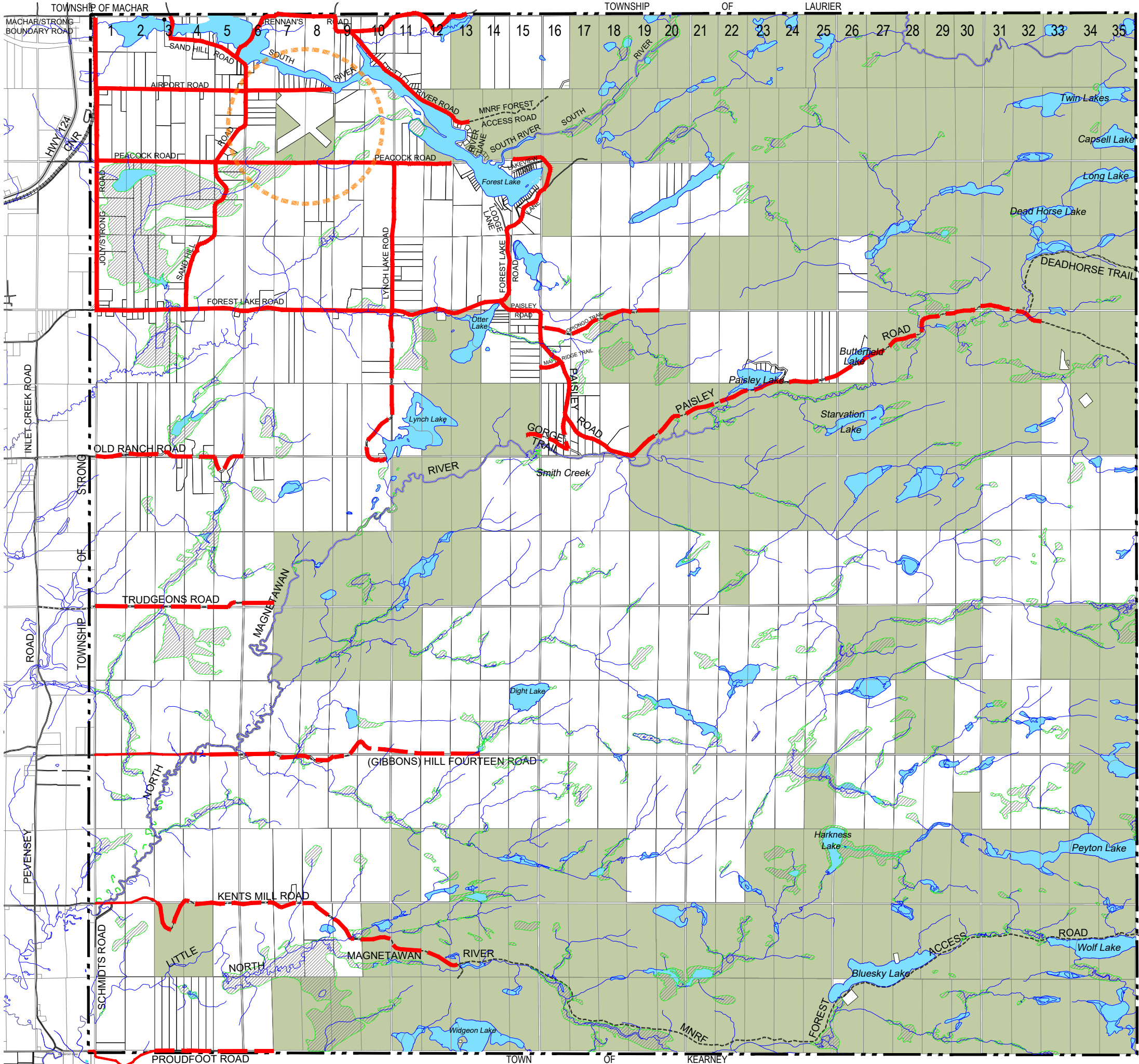
Proudfoot Road

From road allowance between Concession 1, Lot 3, traveling east ending at Concession 1, east boundary of Lot 5

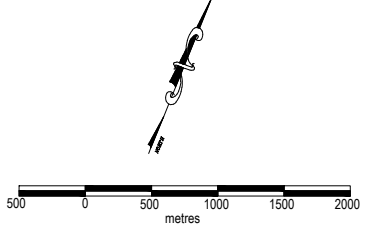
TOWNSHIP OF JOLY OFFICIAL PLAN SCHEDULE 'B' TRANSPORTATION

LEGEND

-  ROADS MAINTAINED YEAR-ROUND BY JOLY TOWNSHIP
-  ROADS MAINTAINED SEASONALLY BY JOLY TOWNSHIP
-  AERODROME SPECIAL POLICY AREA
-  CROWN LAND
-  MUNICIPAL BOUNDARY



(DISTRICT OF NIPISSING)
PAXTON
OF
TOWNSHIP



CURRENT
TO
SEPTEMBER 12, 2024

ROBERT J. MILLER
PROFESSIONAL LAND USE PLANNER